

**B.O.Q FOR INTERIOR FURNISHING, ELECTRICAL &
DATA CABLING WORKS OF PROPOSED BANK & ATM
AT MANTESWAR BRANCH, PURBA BARDHAMAN**

**MANTESWAR,
PURBA BARDHAMAN, WEST BENGAL- 713145**

OWNER : UCO BANK

**ZONAL OFFICE -UCO BANK,PURBA BARDHAMAN
WEST BENGAL-713145**

CONSULTING ARCHITECT - ARCHI SPACE CONSULTANT

ADDRESS :PACIFIC WIND ,69/3A RAJA S.C MALLICK ROAD 2ND FOOR ,

NEAR BAGHAJATIN HOSPITAL

KOLKATA - 700086

CONTACT - 9830006396, 033-2425-0125

DATE : 30.08.2022

B.O.Q FOR INTERIOR FURNISHING WORK- MANTESWAR BRANCH, PURBA BARDHAMAN					
SR.NO	DESCRIPTION	QTY.	UNIT	RATE (Rs.)	AMOUNT (Rs.)
A.	FALSE CEILING				
A.1	False Ceiling - Gypsum Board:	500	S.FT		
	<p>Providing & Fixing suspended gypsum false ceiling, which includes providing and fixing G.I. Perimeter channels of size 0.55mm thick having one flange of 20mm and another flange of 30mm & a web of 27mm along with perimeter of ceiling screws fixed to brick wall/ partition with the help of nylon sleeves and screws at 600mm centers then suspending G.I. Intermediate channels of size 45mm X 0.9mm thick with 2 flanges of 15mm each from the soffit at 1220mm centers with ceiling angle of width 25 X 10mm X 0.55mm thick fixed to soffit with G.I. & steel expansion fastners only, "Fastners" shall be used for ceiling supports. Ceiling section of 0.55mm thickness having knurled verb of 51.5mm & two flanges of 26mm each with lips of 10.5mm are then fixed to the intermediate channel with the help of connecting clips & in direction perpendicular to the intermediate channel at 457mm centers. 12.5mm tapered edge gyp board (Conforming to IS-2095-1982) is then screws fixed to ceiling to ceiling section with 25mm dry wait at 230mm centers, additional supports for AC grill shall be fixed as per instructions and AC Plan / Section / Layout. Screw fixing is done mechanically either with screw driver of drilling machine with suitable attachment. The boards are to be jointed and finish so as having a flush look, which includes filling and finishing the tapered and square edges of the boards with jointing compound, paper tape & two coats of primer suitable for Gyp board. Note :- For light fittings, grills diffusers and cutouts, speakers, fire detectors etc. have to be made with the frame of perimeter channels of size 20 X 27 X 30mm X 0.545mm thick, supported suitably as per direction of Architect, Electric or A.C. Consultants & shown as per detail drawing without additional payments. Entire false ceiling shall be finish with 3 coats of ICI. Plastic emulsion paint with necessary scraping, putty, leveling & smooth finish with scaffolding, cleaning etc.</p>				
B.	WOODEN PARTITIONS				
B.1	Full Height Wooden Double Skin Solid Partition With Laminate Finish	170	S.FT		
	<p>Supply & Erecting Solid Partition upto true ceiling, as per drawing & conforming to the following specification: Basic Framework: Well seasoned Malaysian Sall wood sections, treated with two coats of wood preservatives, 50x50 mm (minimum) at maximum 2 ft horizontal and vertical spacing as per site condition. Vertical member shall be suitably anchored at floor level to ensure rigidity Skin Membrane: 6 mm BWR grade Ply wood on each face with 2 mm groves as per drawing / instruction. Laminate Finishing: 1.0 mm thk. laminate sheet of combination shades as per instruction (approved make) on Both face Skirting: The Partition will be finished with 4" wide Skirting finished with 1.0 mm thick Bank's approved colour laminate of approved make on Both Side. Note: Quoted Rates shall include all necessary material, accessories and also allow provisions for electrical / Telephone / Computer wiring conduits and switch boxes etc. (Materials of wiring conduits and switch boxes shall be separately paid for) The work to be completed as per instruction.</p>				
B.2	HALF HT. Wooden Partly Glazed Partition With Laminate Finish	75	S.FT		
	<p>Supply & Erecting Partly Glazed Partition upto 4'-6" HT., as per drawing & conforming to the following specification: Basic Framework: Well seasoned Malaysian Sal wood 2" x 1/2" sections treated with two coats of wood preservatives, (minimum) at maximum 2ft horizontal or vertical spacing as per site condition. Vertical member shall be suitably anchored at floor level to ensure rigidity. Skin Membrane: 6 mm BWR grade Ply wood on each face with 2 mm groves as per drawing / instruction. Finishing: 1.0 mm thk. laminate sheet of combination shades as per instruction (as approved make) on both sides. Skirting: The Partition will be finished with 4" wide Skirting Finished with 1 mm thick Laminate of approved make & Colour. Glazing: 8 mm. thk. Clear float glass with pencil polish edges from 3'-0" to 4'-6" fixed with continuous wall nut / wenge. It should be fixed with teak wood beading (size - 30mm x 20mm) all around, finished with melamine polished. Polishing will be the same colour as that lamination i. e. cedar finished. Note: Quoted Rates shall include all necessary material, accessories and also allow provisions for electrical / Telephone / Computer wiring conduits and switch boxes etc. (Materials of of wiring conduits and switch boxes shall be separately paid for). The erection of partition shall include for expansion bolts cleats, clamps bolts, nuts, screws, rivets and other accessories, all complete. as per instruction.</p>				

SR.NO	DESCRIPTION	QTY.	UNIT	RATE (Rs.)	AMOUNT (Rs.)
B.3	CASH PARTITION	70	S.FT		
	<p>Same as - Wooden Double Skin Partly Glazed Partition.</p> <p>Glazing : 8 mm. thk. clear float glass with pencil polish edges from 3'-6" to 5'-0" fixed with continuous wall nut / wenge. It should be fixed with teak wood beading (size - 30mm x 20mm) all around, finished with natural polished. Polishing will be the same colour as that lamination i. e. cedar finished.</p> <p>Intermediate trays: There will be provision for small trays/ windows for transferring of small copy either from the banking area to the cash cabin or between the cash cabins. it should be finished with 1.0 mm thick Bank's approved colour laminate of approved make. its edges to be same finish. it should have a small door finished with laminate and fitted with all necessary fittings as per drawing/ instruction.</p> <p>Note : Quoted Rates shall include all necessary material, accessories and also allow provisions for electrical/ Telephone/ Computer wiring conduits and switch boxes etc. (Materials of wiring conduits and switch boxes shall be separately paid for). The erection of partition shall include for expansion bolts cleats, clamps bolts, nuts, screws, rivets and other accessories, all complete. The work to be completed as per instruction.</p>				
C.1	GLASS BARRIER	25	S.FT	110	
	<p>Providing and Fixing glass barrier in front of work station made out of 8 mm thick polished edged float glass with teak wood beading (size - 30mm x 20mm) all around, finished with melamine polished. Polishing will be the same colour as that lamination i. e. cedar finished. The erection of divider shall include for expansion bolts cleats, clamps bolts, nuts, screws, rivets and other accessories. all complete. The work to be completed as per instruction of the Architect.</p>				
C.2	GLASS DIVIDER	20	S.FT		
	<p>8mm. thk. clear float glass divider on table top for separation of each workstation with pencil polish edges. It should be fixed between two tables with teak wood beading (size - 30mm x 20mm) all around, finished with melamine polished. Polishing will be the same colour as that lamination i. e. cedar finished. The erection of divider shall include for expansion bolts cleats, clamps bolts, nuts, screws, rivets and other accessories. all complete. The work to be completed as per instruction of the Architect.</p>				
D.	DOOR				
	<p>Providing and fixing solid core flush door of 38 mm thk. Finished with 1 mm thk. approved colour laminate . A wooden cover moulding of 3"x3/4" thk. white beech /teak wood with polish shall be provided. 8 mm thk. clear float glass shall be provided with 1 1/2"x3/4" thk. White beech/teak wood moulding with polish for partly glazed door. In case of vision panel door 18"x9" made out of 8 mm thk. Clear glass with moulding with polish to be provided. The rate shall be inclusive of 4" s/s hinges, door stopper, screws, 10" 'H' shape s/s handle (Kitch), dead lock, key hole cover, tower bolt, door closer of approved make. All edges of the door to be covered with necessary lipping with polish. The work should be completed as per specification, design and approval of Architect.</p> <p>Note: Wooden door frame fixed to the wall shall have 4" x2 1/2" Teak wood / sal wood (seasoned) section with natural polish. The doors fitted with door closers shall be provided 3" x 1 1/2" white beech / Teak wood section with natural polish for door frame work.</p>				
D.1	Flush door -(D1) - 3'-0" x 6'-6"	4	NOS		
D.2	Flush door -(D2) - 2'-6" x 6'-6"	2	NOS		
D.3	Toilet PVC door -(D-3) - 2'-6" x 6'-6"	2	NOS		
D.6	MAIN ENTRANCE DOOR	45	S.FT		
	<p>Providing & fixing in position Twin stile door made of 40 mm thk well seasoned teak wood of top & bottom stiles, fixed portion with 10mm thick toughened glass & openable portion with double shutter made of 12 mm thk toughened glass with necessary hardware fixtures of approved make & design, viz. double action ISI marked floor springs, on which the shutters are pivoted at the top & bottom, brass flushbolt, satin finish stainless steel decorative tubular handles on both the faces, (Dorset or equivalent approx. 300mm long) complete as per direction. Rate should include the Bank's logo & emblem on the Glass in the size & design as approved by the architect. Wooden surface should be polished in approved shade N.C. Lacquer in matt satin finish.</p>				
E.	TABLE				

SR.NO	DESCRIPTION	QTY.	UNIT	RATE (Rs.)	AMOUNT (Rs.)
	<p>Providing, fixing and fittings in position tables (6" projecting customer side) & 2'-6" ht. made out of 19 mm thk BWR block board for top, sides and front of approved make finished with 1.0 mm laminate as per design in all visible areas. The table will be supported on right side by a 1'-4" wide drawer unit consisting of one drawer and one filing drawer and foot rest on the other side. The front of the drawer unit will be made out of 19 mm thk. BWR block board, other sides made out of 12 mm thk BWR ply and 4" skirting throughout (Foot rest).</p> <p>All exposed surfaces are finished with 1.0 mm thk. Laminate of approved make & colour shade and inner surface will be 1 coat primer and 2 coat synthetic enamel paint. All exposed edge finished with white beach/teak wood moulding, lipping with melamine polished. Polishing will be of the same color as that of lamination i.e., of Cedar finish. The drawers and shutters to be provided with drawer sliding channels, S/S 4" long handles, s/s hinges, locks etc all necessary accessories. Wire manager for each (approved colour) will be provided, all complete.</p> <p>NOTE : First drawer at each work station must have shelves for segregating currency notes pens/staplers / stamps etc. Drawer at each workstation to divided in 2 equal parts by a horizontal partition and the front partition among these to be divided into 3 equal partitions by vertical partitions.</p>				
E.1	Manager Table with Glass Top (2'-6" DEPTH X 2'-6" HT.)	5	RFT		
E.2	Officer Table (2'-6" DEPTH X 2'-6" HT.)	11	RFT		
E.3	Black powder coated key board tray with slide channel	4	NOS		
F.	CASH COUNTER				
	Providing and fixing the cash counters along with front partition all complete.				
	<p>All exposed surfaces are finished with 1.0 mm thk. Laminate of approved make & colour shade and inner surface will be 1 coat primer and 2 coat synthetic enamel paint. All exposed edge finished with white beach/teak wood moulding, lipping with melamine polished. Polishing will be of the same color as that of lamination i.e., of Cedar finish. The drawers to be provided with drawer sliding channels, S/S 4" long handles, s/s hinges, locks etc all necessary accessories. Wire manager for each (approved colour) will be provided, all complete.</p> <p>Providing and Fixing glass barrier made out of 12 mm thick polished edged float glass, in front 1'-6" ht. of cash counter (above the the transaction top), leaving a cutout 3" throughout at the bottom so as to allow conversation between the customer & the cashier. It shall have 25mm x 20mm teakwood beading (as approved) to hold the glass from sides. The rates shall include for cutting (in geometrical shape, center bottom part of the transaction top) and polishing the edges. The work should be complete as per drawing & instruction of the Architect/ Bank.</p> <p>NOTE: First drawer at each work station must have shelves for segregating currency notes pens/staplers / stamps etc. Drawer at each workstation to divided in 2 equal parts by a horizontal partition and the front partition among these to be divided into 3 equal partitions by vertical partitions.</p>				
F.1	2 nos. Table	10	R.FT		
F.2	Glass Barrier (Front)	30	S.FT		
F.3	Black powder coated key board tray with slide channel	2	NOS		
G.	SIDE CREDENZO of Size 3'-0" x 1'-6" x 2'-6" (For Manager)	10	S.FT		
	<p>The side unit is of size 3'-0" (L) X 1'-6" (W) X 2'-6" (H) with sliding shutters, made of 19mm thick BWR grade block boards all finished in 1.0mm thk.laminate, of approved shade and make. Free edges of block board shall have polished white or steam beech wood half round moulds (out of 20 x 20 mm sections). Inner faces of cabinet units shall be finished with 1 coat primer and 2 coat synthetic enamel paint. Quoted rates shall include cost of necessary hardware , s/s Hinges, locks, magnetic catches, tower bolt, "D" type Matt finish S.S. Handles and all necessary hardware shall be inclusive, all complete. As per drawing and instruction.</p>				
H.	LOW HT. STORAGES (1'-6" DEPTH X 2'-6" HT.)	35	S.FT		
	<p>The LOW HT. STORAGES with sliding shutters, made of 19mm thick BWR grade block boards all finished in 1.0mm thk.laminate, of approved shade and make. Free edges of block board shall have polished white or steam beech wood half round moulds (out of 20 x 20 mm sections). Inner faces of cabinet units shall be finished with 1 coat primer and 2 coat synthetic enamel paint. Quoted rates shall include cost of necessary hardware , s/s Hinges, locks, magnetic catches, tower bolt, "D" type Matt finish S.S. Handles and all necessary hardware shall be inclusive, all complete. As per drawing and instruction.</p>				

SR.NO	DESCRIPTION	QTY.	UNIT	RATE (Rs.)	AMOUNT (Rs.)
	Providing and fixing Full height Cabinet made out of made out of 19 mm BWR ply, 6 mm thk. Ply for back finished and 4" skirting throughout. Division of shutters shall be made equally according to the length of the storage. A 19 mm thk. Fixed BWR Ply shelf on battens shall be provided at 16" intervals from the base. All exposed surfaces are finished with 1.0 mm thk. Laminate of approved make & colour shade and inner surface finished with 1 coat primer and 2 coat synthetic enamel paint. All exposed edge finished with white beach/teak wood moulding, lipping with melamine polished. Polishing will be of the same color as that of lamination i.e., of Cedar finish. Cost of all fitting like s/s Hinges, locks, magnetic catches, tower bolt, "D" type Matt finish S.S. Handles and all necessary hardware shall be inclusive, all complete. As per drawing and instruction.				
I.	WRITING LEDGE (4'-0" X 1'-6" X 1'-6")	1	NOS		
	Providing & fixing WRITING LEDGE made out of 19 mm BWR ply frame for sides, which shall be finished Laminate of approved make/ colour 1.0 mm thk laminate. 12mm thick CLEAR Glass shall be fixed at top & side level with polish at exposed sides. 8mm thick CLEAR Glass shall be fixed vertically at every 4" c/c with smooth polishing at 4 sides and instructions of the Architect.				
K.	SUGGESTION BOX & CHEQUE DEPOSIT BOX				
	Providing and fixing suggestion box & cheque deposit box 1'-6" x 1'-6" x 6" with 1" wide slit for inserting cheques & letters (individual) made out of 18 mm BWR block board and finished with 1.0 mm thk laminate & inside to be synthetic enamel painted. A 1" high slit & small door with key and locking arrangement to be done for dropping & taking out the slips, all complete as per instruction.				
K.1	Suggestion box	1	NOS		
K.2	Cheque deposit box	1	NOS		
L.	PLYWOOD CLADDING	500	Sq.ft.		
	Providing and fixing 18 mm. thk. Plywood cladding to internal brickwalls(4'-6" HT.) finished with 1mm thk. Laminate (approved make & colour) on faces with 0.5" moulding on top.				
M.	TRAP DOOR & BOXING FOR ROLLING SHUTTERS	50	SFT		
	Providing and fixing trap doors consisting of 1/4" thk. Marine ply shutters with a clear opening of 4.5" opening for smooth operation of shutters and rest is closed with mirror screws (for opening for servicing). The shutters shall be finished with approved 2.0 mm Aluminium composite sheet, frame of 2" x 1 1/2" teak wood sections shall be provided for proper support and strength. Rate shall be inclusive of necessary fittings like hinges, ball catches, tower bolts, etc. Complete as per the instructions of Architect.				
N.	MAIN PANEL ENCASEMENT	20	SFT		
	Providing & Fixing 3" X 1 1/2" c.p.t.wood frame work to the wall along with 18 mm thick Commercial ply with 1.0 mm thick of approved make/color laminate with teak wood battens strips of 1" X 1" in tapered fashion of approved shade fixed with box hinges & bedding patti finish with 3 coats of polish & providing Handles, Locks etc., of approved make/design colour etc. Complete as per instructions of Architect.				
O.	VERTICAL BLINDS WITH SCOTCH GUARD	75	SFT		
	Providing & fixing in place 100 mm. Vertical blinds of approved make, quality and colour shade & pattern. Rate shall include necessary scotch guard treatment on both sides. The overlaps should be uniform & adequate.				
P.	FROST FILM / ETCHING FILM OVER GLASS	120	SFT		
	Providing and fixing etching film as directed by Bank/ Architect of glass, to proper level, with out air bubbles / cuts / folds etc. complete.				
Q.	PAINTING AND PUTTY WORKS				

SR.NO	DESCRIPTION	QTY.	UNIT	RATE (Rs.)	AMOUNT (Rs.)
Q.1	Providing and applying white cement based putty of average thickness 1mm, of approved brand and manufacturer, over the plastered wall surface to prepare the surface even and smooth complete	2,500	SFT		
Q.2	Wall painting with plastic emulsion paint of approved brand and manufacture to give an even shade:	2,500	SFT		
	TOTAL INTERIOR FURNISHING WORKS OF BRANCH				
IN WORDS :					

B.O.Q FOR ELECTRICAL WORK- MANTESWAR BRANCH, PURBA BARDHAMAN

SR.NO	DESCRIPTION	QTY.	UNIT	RATE (Rs.)	AMOUNT (Rs.)
<p>All installations shall comply with the requirements of the Indian Electricity Rules, 1956, as amended from time to time and as per relevant clauses of National Electrical Code, 1985. Installations shall conform in all respects to Indian Standard Code of Practice for electrical wiring installation IS. 732-1963 and IS 2274-1963. It shall also be in conformity with the regulations and requirements of the Local Electric Supply Authority. Wherever these specifications call for a higher standard of materials and/ or workmanship than those required by any of the above regulations, this specification shall take precedence over the said regulations and workmanship not covered by the above shall confirm to the Indian standards, unless otherwise called for. Equipment shall be given tropical and fungicidal treatment as per IS – 3202.</p>					
A.	MAIN PANEL :				
A.1	Main incoming switch fuse unit supplying , fixing 100A TPN HRC type for main incoming on M/s angel iron frame with 2-Nos cable entry box including connection with both end copper socketing by crimping method	2	SET		
A.2	4x25 mm sq pvc insulated copper flexible wire from cut out to main incoming switch fuse unit including connection with both end copper socketing by crimping method with 2-Nos 10 swg copper earth lid from earth bar to main switch	50	RFT		
A.3	1 No 100 A. TPN. MCCB (main incoming)	1	NOS.		
A.4	1 No 63A 4-P MCB. For A.C. controlling MAKE LEGRAND	1	NOS.		
A.5	1 No 40 A. TPN. MCB for Branch controlling	2	NOS.		
A.6	1 No 25 A. TPN. MCB for Generator controlling	1	NOS.		
A.7	1 No 63A 4-P change over switch	1	NOS.		
A.8	1 No 100A 4-bar copper busbar Lighting	1	NOS.		
A.9	1 No 100A 4-bar copper busbar A.C Power	1	NOS.		
A.10	1 No 25A D.P. MCB. For volt controlling	1	NOS.		
A.11	1 No 40A D.P. MCB. For sign board	1	NOS.		
A.12	1 No 63A 4-P MCB for UPS	1	SET		
A.13	Phase indicating lamp & controls with wiring (15W lamp Red, yellow & Blue)	3	NOS.		
B.	SUPPLYING & LAYING OF CABLE				
	supplying & Laying of above cable with 2Nos 10 SWG.CU earth on wall/column including supply & fixing of M.S. clamps/galvanised bar saddles@ 300 mm apart, as required making holes and mending good damages				
B.1	Main Meter to Main panel 3.5 core 50 Sq.mm.	45	RFT		
B.2	Main panel to main switch 3.5 core 35 Sq.mm.	45	RFT		
B.3	Main panel to A.C.D.B. 4 core 25 Sq.mm.	45	RFT		
B.4	Main panel to TPN Lighting DB.4 core 16 Sq.mm.	45	RFT		
C.	CABLE GLAND AND FINISHING THE END				
	Supplying & fixing of compression type brass cable gland along with rubber rings for dust and moisture proof entry of following 1.1 KV grade aluminium conductor PVC insulated & PVC sheathed armoured cable and finishing the end by crimping method including supply and fixing of "Dowell" make solderless socket, tapes and jointing materials as required to be completed in all respect				
C.1	Main Meter to Main panel 3.5 core 50 Sq.mm.	2	Each		
C.2	Main panel to main switch 3.5 core 35 Sq.mm.	2	Each		
C.3	Main panel to A.C.D.B. 4 core 25 Sq.mm.	2	Each		
C.4	Main panel to TPN Lighting DB.4 core 16 Sq.mm.	2	Each		

SR.NO	DESCRIPTION	QTY.	UNIT	RATE (Rs.)	AMOUNT (Rs.)
	Supply, installation, testing and commissioning of following MCB Distribution Board in sheet steel enclosure with double door and suitable for mounting on wall by surface / chase cutting and flushed with finished level to the position shown in the Electrical Layout complete in all respect, mending good all damages to the original finish, painting interconnection, etc. as required. :-				
D.	A.C DISTRIBUTION BOARD (A.C.DB)				
	4 way TPN MCB DB complete with busbar and the following MCBs/RCBO <u>Incoming:-</u> 1 no. : 415V 63 -A 4P MCB 10 KA <u>Outgoing :</u> 6 Nos 240V10-A SP MCB 6 Nos. 240V 20-A SP MCB 1 No. : Cable entry box	1	SET		
E.	LIGHTING DISTRIBUTION BOARD (L. DB)				
	4 way TPN MCB DB complete with busbar and the following MCBs/RCBO <u>Incoming:-</u> 1 no. : 415V 100 -A 4P MCB 10 KA <u>Outgoing :</u> 6 Nos 240V10-A SP MCB 6 Nos. 240V 20-A SP MCB 1 No. : Cable entry box	1	SET		
F.	UPS DISTRIBUTION BOARD (UPS. DB)				
	Supplying & fixing UPS D.B. counsumar unit 2+8 way SPN 1no 32 A DP MCB 4nos 6 A-S.P.MCB 4nos 10A-S.P.MCB	1	SET		
G.	POINT WIRING :				
	Supply, laying, connection & testing of light, fan point, wiring by 2x1.5mmsq(2x3/.029) + 1x1mmsq PVC insulated copper flexible wire maintaining the colour code as per direction in PVC conduit of 20mm with ISI mark 1.5 pvc wall thk. to conceal in wall partition mending good the damage, complete with pvc circular box, bend to be done as per drawing including 3 point ceiling rose where ever required. GI saddle to be used for fixing, pvc conduit/ flexible pipe may use if required in partition wall. All pvc pipes should be with ISI mark. No joints will be allowed inside pipe.Light, fan & plug point complete with modular type switch plate & MS box. Including the main circuit line 2x2.5mmsq+1x1.5mmsq earth PVC insulated Cu. Wire, maintaining the colour code. Circuit line for lighting switch board ,6 Amps plug board are to be drawn from lighting DB to Lighting board & 6A plug point board, 6/16 Amps plug point line are to be drawn from power DB. 3 Nos lighting board/ 03 Nos.6 Amps plug are to be connected from one circuit & 02 Nos. 6/16 plug to be connected from one circuit (Lighting S.Board height-32" from floor).				
G.1	Light Point - 1 Light point control by 01 switch.	20	NOS.		
G.2	light Point -2 Light point control by 01 switch.	10	Nos.		
G.3	Wall bracket fan point control by 01 switch with two pin socket in fan end	10	NOS.		
G.4	Exust fan point with controlling switch	2	NOS.		
G.5	Coll bell point wiring with 2x 1.5 Cupper flixible wire in PVC regid pipe wiring with coll bell & push	2	NOS.		
G.6	Socket point wiring with 6Ams 5pin socket with controlling switch on board	10	NOS.		
H.	POWER WIRING				
H.1	Supply, Laying of Circuit line 2x2.5mmsq +1x 1mmsq VC insulated copper wire form LDB to 6/16A or 6 Amps Plug point. Also note that 03 Nos 06 amps Plug to be connected from one circuit line	300	RFT		
H.2	Providing & fixing Computer Plug Points with 4 Nos. 16 Amp sockets. & 4 Nos. 16 AMP Switch complete with all necessary accessories.	6	NOS.		
I.	UPS WIRING				
I.1	Supply laying of circuit line 2 x 2.5 Sq.mm + 1 x 1.5 Sq.mm MSCC PVC insulated wires drawn in 20 mm dia PVC conduit pipe with ISI mark from UPS DB to computer.	300	RFT		

SR.NO	DESCRIPTION	QTY.	UNIT	RATE (Rs.)	AMOUNT (Rs.)
I.2	Supply laying of circuit line 2 x 6 Sq.mm + 1 x 1.5 Sq.mm MSCC PVC insulated wire through suitable size PVC conduit pipe with ISI mark from main DB to UPS incoming power DP controlling MCB	150	RFT		
I.3	Supply laying of circuit line 2 x 6 Sq.mm + 1 x 1.5 Sq.mm MSCC PVC insulated wire trough suitable size PVC conduit pipe with ISI mark from UPS power controlling DP MCB to UPS outgoing DB	150	RFT		
J.	UPS CLUSTER POINT	6	NOS.		
	Supply fixing of 2x6 Amps 5 pin socket + 1x16 amps 6 pin socket in with controlling switch MS box front plate with inter connection complete each work station				
K.	TELEPHONE WIRING :				
K.1	Telephone Wiring : Supply & laying of 2 pair PVC insulated wire , 0.5 mm down through PVC conduit pipe	100	RFT		
K.2	Supply & fixing of telephone outlet RJ-111 socket with suitable mounting box with front plate	2	NOS.		
K.3	Supply & fixing of telephone Junction box 10 pair krone type housed in MS box with Lock & key.	1	NOS.		
L.	A/C. ELECTRIFICATION :-				
L.1	Supply laying & connection of A/C. line for 1.5/2TR split A/C with 2x6 + 1x4 mmsq through 16 SWG pvc conduit with ISI Mark.	300	RFT		
L.2	Supply, fixing of A/C. 18-25 Amps stator complete with 20 amps socket in modular type box for split unit at 4.5 Ft from floor.	4	UNIT		
M.	GLOW SIGN BOARD WIRING :-				
M.1	Out door type Glow Sign board wiring :-Supply, laying of main line with 2x2.5 +1x1.5 mmsq through pvc conduit from main panel to glow sign board.	100	RFT		
M.2	Supply installation of 16 amps DP mcb at main entrance Glow sign board complete with timer & contractor (2NO + 2NC). 24 Hrs in original housing.	1	SET		
N.	ELECTRICAL FIXTURES :				
	Item includes Providing , assembling , fixing , testing & commissioning following fixtures including all accessories , lamps & extension chords as maybe necessary complete. All LED / Fluorescent fixtures (except down lighters) to be hung from the RCC ceiling by 20 KG grade adjustable GI chain& in NON False ceiling area they are to be hung by appropriate down rods.				
N.1	Buzzer or calling of Bajaj / Anchor / National / Homa	2	Nos.		
N.2	2x2 ft (36 W)LED Light Fitting including supplying and fixing for recess mounting on false ceiling	11	unit		
N.3	6" DIA, LED (12 Watt.) Recess mounting circular Down light.	16	unit		
N.5	12 W Panel Light FOR CASH	2	Nos.		
N.6	Supply & Fixing of 4 ft Long led tube light (18W)	8	Nos.		
N.7	Supply & Fixing of 2 ft Long led tube light (12W)	2	Nos.		
N.8	Supply & Fixing 400 mm diameter Wall Mounting Fan	12	Nos.		
N.9	250mm dia wall mounted exhaust fan of decorative plastic body and blade with louvers on the outside (Newtek/Crompton/Approved Equivalent)	3	Nos.		

SR.NO	DESCRIPTION	QTY.	UNIT	RATE (Rs.)	AMOUNT (Rs.)
O.	EARTHING STATION :				
O.1	Spike earthing with G.I. electrode 3 mts. Longx 50 mm dia (Class-B) including accessories & providing masonry enclosure with cover 300x300 mm plate having locking arrangement & watering funnel etc. with charcoal, sand & salt at alternate layer as required for & for main electrical panel earthing.	1	NOS.		
O.2	UPS earthing with 600x600 x3mm copper electrode with 25X3 mm copper flat connected from electrode to earth bus 3 mts. Depth from ground level 50 mm dia perforated G.I. pipe 3mtr Long for watering including accessories & providing masonry enclosure with cover 300x300 mm plate having locking arrangement & watering funnel etc. with charcoal, sand & salt at alternate layer as required for UPS earthing	1	NOS.		
O.3	Supply laying 6sq mm pvc insulated copper flexible wire in pvc conduit pipe from earth pit to ups earth bus,	50	RFT		
O.4	Laying earth 25X3mm copper flat from earth pit to earth bus with saddelling	50	RFT		
O.5	Making earth bus 25X3mm X200mm length copper earth bus with insulator	2	NOS.		
	TOTAL ELECTRICAL WORKS OF BRANCH				
IN WORDS :					

B.O.Q FOR INTERIOR FURNISHING WORK OF ATM- MANTESWAR BRANCH, PURBA BARDHAMAN

SR.NO	DESCRIPTION	QTY.	UNIT	RATE (Rs.)	AMOUNT (Rs.)
A.	False Ceiling - Gypsum Board:	45	Sq.ft.		
	<p>Providing & Fixing suspended gypsum false ceiling, which includes providing and fixing G.I. Perimeter channels of size 0.55mm thick having one flange of 20mm and another flange of 30mm & a web of 27mm along with perimeter of ceiling screws fixed to brick wall / partition with the help of nylon sleeves and screws at 600mm centers then suspending G.I. Intermediate channels of size 45mm X 0.9mm thick with 2 flanges of 15mm each from the soffit at 1220mm centers with ceiling angle of width 25 X 10mm X 0.55mm thick fixed to soffit with G.I. & steel expansion fastners only, "Fastners" shall be used for ceiling supports. Ceiling section of 0.55mm thickness having knurled verb of 51.5mm & two flanges of 26mm each with lips of 10.5mm are then fixed to the intermediate channel with the help of connecting clips & in direction perpendicular to the intermediate channel at 457mm centers. 12.5mm tapered edge gyp board (Conforming to IS-2095-1982) is then screws fixed to ceiling to ceiling section with 25mm dry wait at 230mm centers, additional supports for AC grill shall be fixed as per instructions and AC Plan / Section / Layout. Screw fixing is done mechanically either with screw driver of drilling machine with suitable attachment. The boards are to be jointed and finish so as having a flush look, which includes filling and finishing the tapered and square edges of the boards with jointing compound, paper tape & two coats of primer suitable for Gyp board. Note :- For light fittings, grills diffusers and cutouts, speakers, fire detectors etc. have to be made with the frame of perimeter channels of size 20 X 27 X 30mm X 0.545mm thick, supported suitably as per direction of Architect, Electric or A.C. Consultants & shown as per detail drawing without additional payments. Entire false ceiling shall be finish with 3 coats of ICI. Plastic emulsion paint with necessary scraping, putty, leveling & smooth finish with scaffolding, cleaning etc.</p> <p>Note:-Area of the False Ceiling will be measured in plan i.e. wall to wall. If Any Existing false ceiling should be removed along with debris out of compound without any extra charge.</p>				
	<p>Supply & Erecting Solid Partition FULL HT. as per drawing & conforming to the following specification: Basic Framework: Well seasoned Malaysian Sall wood sections, treated with two coats of wood preservatives, 50 x 50 mm (minimum) at maximum 2 ft horizontal and vertical spacing as per site condition. Vertical member shall be suitably anchored at floor level to ensure rigidity Glass Membrane: 6 mm BWP made Plywood on each face with 9 mm grooves as per drawing / instruction</p>				
	<p>Providing and fixing Full height Cabinet made out of made out of 19 mm BWR ply, 6 mm thk. Ply for back finished and 4" skirting throughout. There will be vertical dividers of same block boards at maximum 4 ft apart on which the shutters will be fitted with stainless steel hinge. All exposed surfaces are finished with 1.0 mm thk. Laminate of approved make & colour shade and inner surface finished with 1 coat primer and 2 coat synthetic enamel paint. All exposed edge finished with white beach/teak wood moulding, lipping with melamine polished. Polishing will be of the same color as that of lamination i.e., of Cedar finish. Cost of all fitting like s/s Hinges, locks, magnetic catches, tower bolt, "D" type Matt finish S.S. Handles and all necessary hardware shall be inclusive, all complete. As per drawing and instruction.</p>				
D.	DOOR				
	<p>Providing and fixing solid core flush door of 38 mm thk. Finished with 1 mm thk. approved colour laminate . A wooden cover moulding of 3"x3/4" thk. white beech /teak wood with polish shall be provided. 8 mm thk. clear float glass with etching (approved design) shall be provided with 1 1/2"x3/4" thk. White beech/teak wood moulding with polish for partly glazed door. In case of vision panel door 18"x9" made out of 8 mm thk. Clear glass with moulding with polish to be provided. The rate shall be inclusive of 4" s/s hinges, door stopper, screws, 10" 'H' shape s/s handle (Kitch), dead lock, key hole cover, tower bolt, door closer of approved make. All edges of the door to be covered with necessary lipping with polish. The work should be completed as per specification, design and approval of Architect.</p> <p>Note: Wooden door frame fixed to the wall shall have 4" x2 1/2" Teak wood / sal wood (seasoned) section with natural polish. The doors fitted with door closers shall be provided 3" x 1 1/2" white beech / Teak wood section with natural polish for door frame work.</p>				
D.1	Flush door -(D2) - 2'-6" x 6'-6"	1	Nos.		
D.2	MAIN ENTRANCE DOOR CUM FIXED GLAZING with sticker design bank's name,logo,etching,band etc				
	a) Openable Portion	21	Sq.ft.		
	b) Fixed Portion	35	Sq.ft.		

SR.NO	DESCRIPTION	QTY.	UNIT	RATE (Rs.)	AMOUNT (Rs.)
	Providing & fixing fully glazed pivoted door at the main entrance consists of 6"x2" c.p.t. wood frame for top rail and 4"x2" c.p.t. wood frame for bottom rail finished with 1.0 mm thk laminate, sides with 1" X 1" c.p.t.wood mouldings of approved design. 12mm thk. toughened glass & finish handle (1'-0" long- both inside & outside) to be fixed on both sides & proper locking arrangement in bottom rail to be done. The rate should include lipping, moulding, beading, sticker design bank`s name, logo, Pull & Push Plate, & heavy duty floor spring of approved make. The work to be completed as per drawing and instruction.				
F.	ACP PANELING	45	Sq.ft.		
	comprising of 4mm thick (0.5 mm + 3 mm + 0.5 mm) approved brand acp material with back Al frame work in 0 level with joints and sizes as per front elevation working drawing. All complete with approved aluminium sub structure, aluminium brackets ,silicon sealants(all the joints shall in 5 mm grooves filled up with black silicon sealant), gaskets , PVDF coating etc. all complete including bird / vermin proof closer at the bottom and flashing.				
G.	Display Boards for Bank's Advertisement	1	Nos.		
	Providing & fixing in position fameless double Acrylic transparent sheets 2'-6" x 1'-6" mounted with studs on the wall (poster to be sandwiched in between) for display of Bank's advertisement inserted on it. Outer sheet is 5 mm thick and beveled crystal edge polished for ¾" at 8-10 degrees on all sides in the front. Rear sheet is 5 mm thick flat. Rate inclusive of S1 grade aluminium.				
H.	TRAP DOOR & BOXING FOR ROLLING SHUTTERS	60	Sq.ft.		
	Providing and fixing trap doors consisting of 1/4" thk. Marine ply shutters with a clear opening of 4.5" opening for smooth operation of shutters and rest is closed with mirror screws (for opening for servicing). The shutters shall be finished with approved 2.0 mm Aluminium composite sheet, frame of 2" x 1 ½" teak wood sections shall be provided for proper supprot and strength. Rate shall be inclusive of necessary fittings like hinges, ball catches, tower bolts, etc. Complete as per the instructions of Architect.				
I.	FROST FILM / ETCHING FILM OVER GLASS	80	SFT		
	Providing and fixing etching film as directed by Bank/ Architect of glass, to proper level, with out air bubbles / cuts / folds etc. complete.				
J.	PAINTING AND PUTTY WORKS				
J.1	Providing and applying white cement based putty of average thickness 1 mm, of approved brand and manufacturer, over the plastered wall surface to prepare the surface even and smooth complete	170	S.FT		
J.2	Wall painting with plastic emulsion paint of approved brand and manufacture to give an even shade:	170	S.FT		
	TOTAL INTERIOR FURNISHING WORKS OF ATM				
IN WORDS :					

B.O.Q FOR ELECTRICAL WORK OF ATM- MANTESWAR BRANCH, PURBA BARDHAMAN

SR.NO	DESCRIPTION	QTY.	UNIT	RATE (Rs.)	AMOUNT (Rs.)
A.1	Main incoming switch fuse unit supplying , fixing 63-A TPN MCB for main incoming on M/s angel iron frame with 2-Nos cable entry box including connection with both end copper socketing by crimping method	1	SET		
A.2	Supplying and fixing 5 to 20-A range 3ph 4 wire KWH Meter in ATM including fitting fixing connection with all accessories	1	Each		
B.	SUPPLYING & LAYING OF CABLE				
	supplying & Laying of above cable with 2Nos 10 SWG.CU earth on wall/column including supply & fixing of M.S. clamps/galvanised bar saddles@ 300 mm apart, as required making holes and mending good damages				
B.1	Main panel to TPN ATM DB.4 core 16 Sq.mm.	15	RMT		
C.	CABLE GLAND AND FINISHING THE END				
	Supplying & fixing of compression type brass cable gland along with rubber rings for dust and moisture proof entry of following 1.1 KV grade aluminium conductor PVC insulated & PVC sheathed armoured cable and finishing the end by crimping method including supply and fixing of "Dowell" make solderless socket, tapes and jointing materials as required to be completed in all respect				
C.1	Main panel to TPN ATM DB.4 core 16 Sq.mm.	1	Each		
	Supply, installation, testing and commissioning of following MCB Distribution				
D.	A.C DISTRIBUTION BOARD (A.C.DB)				
	4 way TPN MCB DB complete with busbar and the following MCBs/RCBO <u>Incoming:-</u> 1 no. : 415V 63 -A 4P MCB 10 KA <u>Outgoing :</u> 6 Nos 240V10-A SP MCB 6 Nos. 240V 20-A SP MCB 1 No. : Cable entry box	1	SET		
E.	POINT WIRING :				
E.1	One light Point controlled by a 6A switch	2	Nos.		
E.2	light Point -2 Light point control by 01 switch.	2	Nos.		
F.	POWER WIRING :				
F.1	Socket point wiring with 6 amps 5 pin with controlling switch on board	2	Nos.		
F.2	Providing & fixing ATM MACHINE Points with 4 Nos. 16 Amp sockets. & 4 Nos. 16 AMP Switch complete with all necessary accessories.	2	No.		
F.3	Supply, Laying of Circuit line 2x2.5mmsq +1x 1mmsq VC insulated copper wire form LDB to 6/16A or 6Amps Plug point. Also note that 03 Nos 06 amps Plug to be connected from one circuit line	80	R.ft.		
G.	UPS WIRING :				
G.1	Supply fixing & connection of UPS circuit line with 2x2.5+1x1.5mmsq through pvc conduite 20mmdia 16 SWG wall thickness, with ISI mark, to lay from UPS MCB DB to plug point board. Two nos separate circuit to be drawn.	40	R.ft.		

SR.NO	DESCRIPTION	QTY.	UNIT	RATE (Rs.)	AMOUNT (Rs.)
G.2	Providing & fixing Raw Power Point includes 2x6/16, 6pin socket with 2nos.16A switch to provide behind ATM at 12" ht. from FFL.to be connected from UPS power.	2	Nos.		
H.	A/C. ELECTRIFICATION :				
H.1	Supply laying & connection of A/C. line for 1.0 TR A/C. window / split with 2x4 + 1x2.5 mmsq through 16 SWG pvc conduite with ISI Mark.	40	R.ft.		
H.2	Supply, fixing of A/C. 11-18 Amps stator complete with 20 amps socket in modular type box for split / window unit at 4.5 Ft from floor.	1	unit		
I.	ELECTRICAL FIXTURES :				
Item					
I.1	2x2 ft (36 W)LED Light Fitting including supplying and fixing for recess mounting on false ceiling	1	unit		
I.2	6" DIA, LED (12 Watt.) Recess mounting circular Down light.	4	unit		
I.3	Supply & Fixing of 4 ft Long led tube light (18W)	1	Nos.		
J.	GLOW SIGN BOARD WIRING :-				
J.1	Out door type Glow Sign board wiring :-Supply, laying of main line with 2x2.5 +1x1.5 mmsq through pvc conduite from main panel to glow sign board.	50	R.ft.		
J.2	Supply installation of 16 amps DP mcb at main entrance Glow sign board complete with timer & contractor (2NO + 2NC). 24 Hrs in orginal housing.	1	Set		
K.	EARTHING STATION :				
Earth bus					
K.1	Spike earthing with G.I. electrode 3 mts. Longx 50 mm dia (Class-B) including accessories & providing masonry enclosure with cover 300x300 mm plate having locking arrangement & watering funnel etc. with charcoal, sand & salt at alternate layer as required for ATM earthing.	1	No.		
K.2	Supply laying 6sq mm pvc insulated copper flexible wire in pvc conduit pipe from earth pit to ups earth bus,	50	RFT		
K.3	Laying earth 25X3mm copper flat from earth pit to earth bus with saddelling	50	RFT		
K.4	Making earth bus 25X3mm X200mm length copper earth bus with insulator	1	Nos		
	TOTAL ELECTRICAL WORKS OF ATM				
IN WORDS :					

DATA CABLING WORK B.O.Q - MANTESWAR BRANCH, PURBA BARDHAMAN

SR. NO.	DESCRIPTION	QTY.	UNIT	RATE (Rs.)	AMOUNT (Rs.)
1	9 u rack Digi Link / Lucent/ HCL co. make supply & installation type Cat 6 PDU - box 1 no., Fan set complete unit.	1	Unit		
2	Digi Link / Lucent/ HCL make Patch panel Unit Supply and Installation of Cat 6, 24 ports Gigabit 10/100/1000 Rack mountable Unmanged Switch	1	Unit		
3	Digi Link / Lucent/ HCL make Patch Cord Cat 6 face plate - 2 port including mounting box for each workstation.	10	Nos.		
4	Supply & Laying of Cat 6 cables 4 Core through pr-laid rigid PVC conduit from server to computer data socket including interconnection mending good, etc. as required (Digi Link / Lucent/ HCL make)	400	R.ft.		
5	Digi Link / Lucent/ HCL make Single Ported RJ 45 IO BOX	10	Nos.		
6	Supply & fixing of 1 mtr patch cord	10	Nos.		
	TOTAL DATA CABLING WORKS				
IN WORDS:					

B.O.Q FOR UCO BANK- MANTESWAR BRANCH, PURBA BARDHAMAN**SUMMARY**

SL NO	DISCRIPTION	AMOUNT (Rs.)
A	BANKING AREA	
	I) INTERIOR WORK	
	II) ELECTRICAL WORK	
	TOTAL COST OF BANKING AREA	
B	ATM AREA	
	I) INTERIOR WORK	
	II) ELECTRICAL WORK	
	TOTAL COST OF ATM AREA	
C	DATA CABLING WORK	
	GRAND TOTAL (A+B+C)	
IN WORDS:		

Note:

** GST COST IS EXCLUDED..

**Cost including all material, labour and Transport charges etc. all complete. The work to be

UCO BANK - MANTESWAR BRANCH, PURBA BARDHAMAN

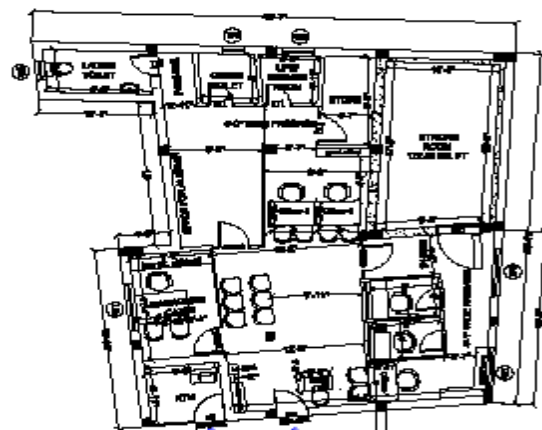
LIST OF APPROVED MATERIALS FOR INTERIOR FURNISHING WORK

Sl.No.	Items	Approved make
1	Wood Frame Work / Wood Section	Local Wood
2	Wood Skirting / Moulding / Lipping / Bidding	White Beach/ White Ceder
3	Door frame	Local Wood
4	BWR Ply / Block board with ISI mark	Century/ Sylvan/ Satabdi/ Avenger/ Alishan
5	Flush Door	Century/ Sylvan/ Satabdi/ Avenger/ Alishan
6	Laminate (1.0 mm thk.)	Sunmica / Euromica / Merino / Airolam/ Durian
7	Door Closure (Heavy Duty)	Archi / Sterling (DC 2000)
8	Floor Spring (Heavy Duty)	Archi / Sterling (FS 3000)
9	Door Lock (Dead)	Godrej/ Kich /Doorset / 4C Acme (ML – REG – SS)
10	Door Handles ('H' Shape)	Godrej / Kich /Doorset / 4C Acme (PHG – HSS)
11	Drawer / Storage Handle (4"/ 6")	Kich /Neki / Hassley/EGL (HMS –B – 9122 / 9123)
12	Drawer / Storage Lock (Multipurpose)	Ebco / Doorset / Godrej / Kombo (502)
13	Screws	GKW / Nettle fold
14	Hinges	CIEF
15	Sliding Telescopic Drawer Channel	Ebco / Kombo
16	Key Board Tray (Metal)	Ebco / Innofitt Systems (KD 510. M)
17	Cable Organiser	Ebco / Innofitt Systems (CM 63.C)
18	Adhesive	Fevicol SH / Fevimate TL
19	Aluminium Door Frame	Jindal
20	Soft Board	Jolly Board
21	Vertical Blinds	Mac / Annums / Window Fashion
22	Glass	Modi /Ashai / Saint Gobain
23	A.C.P	Alu Decor / Alu Bond / Alstone/ Wonder Alu board Accura/ Pratap Bond
24	Vitrified Tiles	Orientbell/Kajaria/ Somany/ Jhonson
25	All other items not covered above	As per sample approved by Bank/ Architect

UCO BANK- MANTESWAR BRANCH, PURBA BARDHAMAN

LIST OF APPROVED MATERIALS FOR ELECTRICAL WORK

Sl.NO	Items	Approved make
1	MS pipe ISI mark. 16 Swg	BEC / NIC
2	MS fittings.	BEC / NIC
3	Wire PVC insulated copper flexiable wire.	Finolex/Havells/Gerard/ Mescab
4	A.C. stator.	North west / Havells
5	Switch, socket modular plate.	Crabtree/MDS/Anchore AVE/ Indoasian
6	Armoured cable.	Nicco/Glostark/KDK/Havells.
7	Telephone Socket RJ -11.	Crabtree/MDS
8	MCB, DB.	MDS/Havells/L&T Hagger/ Indoasian
9	Telephone cable (0.51mmsq).	Netco/Delton.
10	Light fittings.	Wipro/Philips/Crompton/Havells/Globe/ Mescab
11	Lugs.	Dowells.
12	Terminals Connector.	ESSEN
13	Exhust fan.	GEC/ EPC.
14	Ceiling Fan/wall mounted fan.	Orient / Crompton / Havells / USHA
15	SFU/SPN/TPN S.M. housing /Open execution fronthandle.	Havells/ L&T/ Semeins.
16	Telephone connector.	KORN type.
17	Volt Meter / Amps Meter. 96x96 mm.	AE / L&T.
18	Current transformer.	Kuppa / L&T.
19	Selector switch.	Kaycee / Indoasian
20	Sliding fuse / DZ fuse.	Bharat Lender/ BCH.
21	PVC tape.	Steel grip/ Anchore.
22	Join Box. 6"x4" MS box Heavey type.	Joiti make.
23	Bearer Call Bell.	Max / Homa.
24	Cable Gland Brass make.	Arun (heavey type).
25	Speaker.	Philips / Bosh.
26	LED incator. 20 dia. (Bright type).	Mikadov / L&T/ MDS.
27	CD palayer.	Philips / Sony.
28	Amplifier	Philips / Sony.
29	Speaker wire.	Finolex.
30	PL /TL lamp.	Philips.
31	PVC flexiable Pipe.	Hunuman.
32	Smoke / heat Detector.	Appolo / Dats.
33	Manual call point.	Minimax/Dats.
34	Security Alam Hooter.	Philips/Dats.
35	Cat -6 cable	Digi Link / Lucent/ HCL.
36	RJ - 45 socket.	Digi Link / Lucent/ HCL.
37	Patch panal	Digi Link / Lucent/ HCL.
38	HUB.	Digi Link / Lucent/ HCL.
39	PVC Regid pipe. MMS.	Precession / AKG / Pesto
40	All other items not covered above	As per sample approved by Bank/ Architect



OPEN SPACE
FOR PARKING

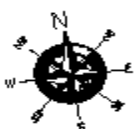
Bank front and main road
no obstruction will be allowed
and that will be fully used for
parking and entrance of branch

THANA ROAD

PROPOSED PLAN OF GROUND FLOOR
UCO BANK,
MANTESWAR BRANCH

Scale for
landlord

SCALE 1:100



AREA STATEMENT:

A) TOTAL BUILT UP AREA OF BANK+ATM:

1270 SQ.FT.

B) TOTAL CARPET AREA OF BANK

(Excluding Toilet, wall, column, UCC etc.): 962 SQ.FT.

C) TOTAL CARPET AREA OF ATM:

40 SQ.FT.

D) TOTAL CARPET AREA OF BANK + ATM:

1000 SQ.FT.

SCHEDULE OF DOORS

TYPE	DESCRIPTION	WIDTH X HEIGHT (FT-INCH)	QTY	REMARKS
C. GL	Collapsible Gate	4'-0" x 8'-6"	1	
GD	Full glass door	3'-6" x 8'-6"	2	with main door closer
WGD	Window Glass door	3'-6" x 8'-6"	2	with main door closer
D1	PVC Door	2'-6" x 8'-6"	4	door to main road
D2	Flush Door	3'-6" x 8'-6"	1	door to main road
D3	Flush Door	4'-0" x 8'-6"	1	door to main road
SD	Screen Room Door	As per Bank Specification		
RS	Rolling Shutter	11'-0" x 8'-6"	2	

SCHEDULE OF WINDOWS

TYPE	DESCRIPTION	WIDTH X HEIGHT (FT-INCH)	QTY	REMARKS
W1	Aluminum sliding window	5'-0" x 4'-6"	3	with External grill fixing
W2	Aluminum sliding window	3'-0" x 4'-6"	1	with External grill fixing
W3	Aluminum sliding window	2' x 2'	2	with External grill fixing

	COLUMN		WOODEN PARTITION
	BRICK WALL		R.C.C. WALL

SCALE 1:100

UCO BANK
ZONAL OFFICE BURDWAN
MANTESWAR BRANCH
PURBA BURDWAN

DRG NO - UCO / MANTESWAR SCHEME

DRAWN BY: RD

DATE: 18.01.2022

ARCHI SPACE CONSULTANT

PACIFIC WING, 3RD FLOOR, BHA, B.L. MALICK ROAD,
NEAR BAHAMANI HOSPITAL, EDUGUDA - 700047,
MOB NO. - 9866888888

